

## Mass Change The In-House Production Time

### SAP PP Ticket:

**All Materials for material group 00107 - Miscellaneous in plant 1000 has wrong In-house production time. It should be 7 days.**

**I would like to get list of materials and correct in house production time.**

**How do I do this?**

Use transaction **MM17** select tables **MARA** and **MARC**. Click fields tab and select MARC-DZEIT. Click execute.

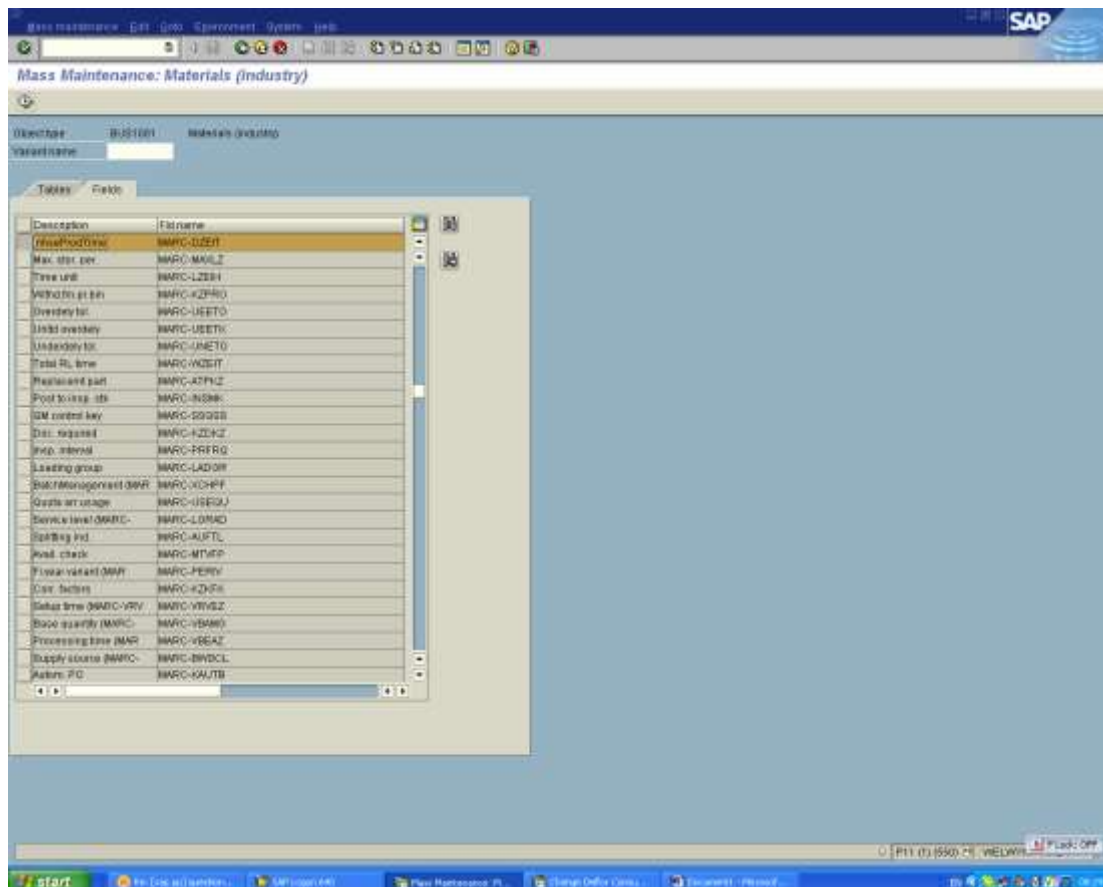
Click the 4th icon along on bottom of screen (Choose selection fields) and move material group over to the left hand side for selection.

Then input your plant and material group and click execute.

Input your new lead time and click the icon to pass new values down to all your materials and click save. Ensure you check that all the materials it brings up you actually want to change before proceeding mind.

**The step by step are as follows:**

After you have selected the tables mara and marc and select the field you want to change DZEIT as shown below. Click the execute button or press (F8) then green tick if you get a warning message pop up.

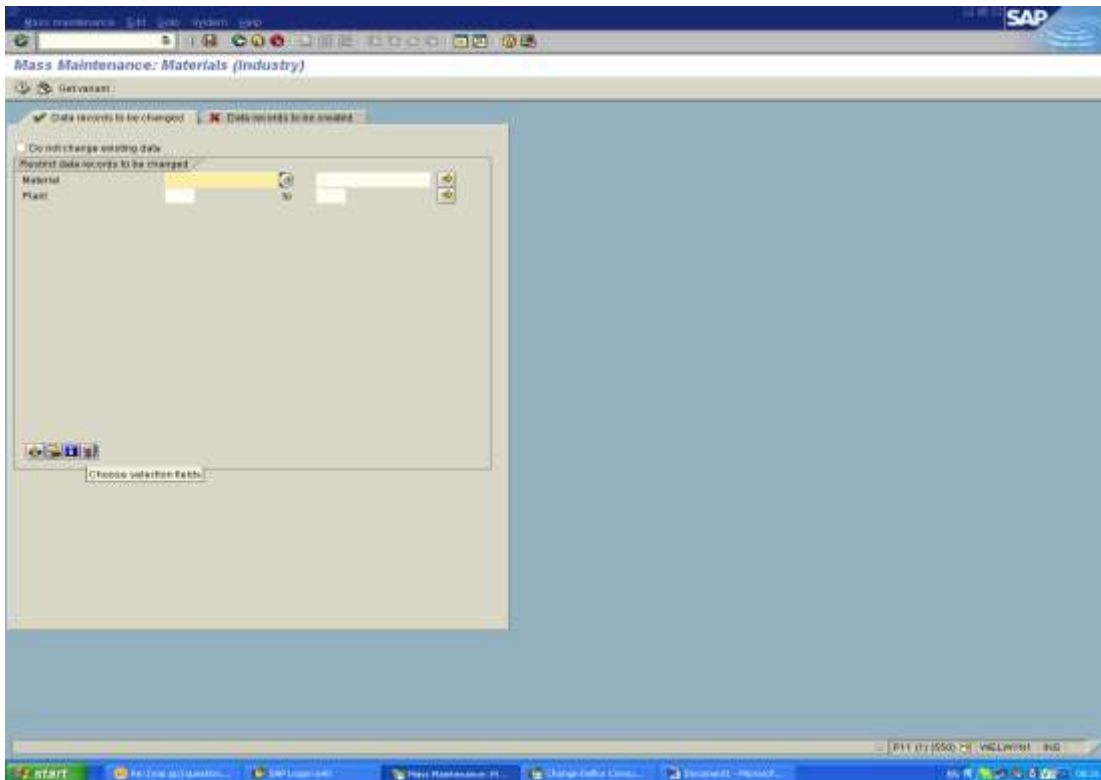


**Get more SAP Production and Planning Tips:**

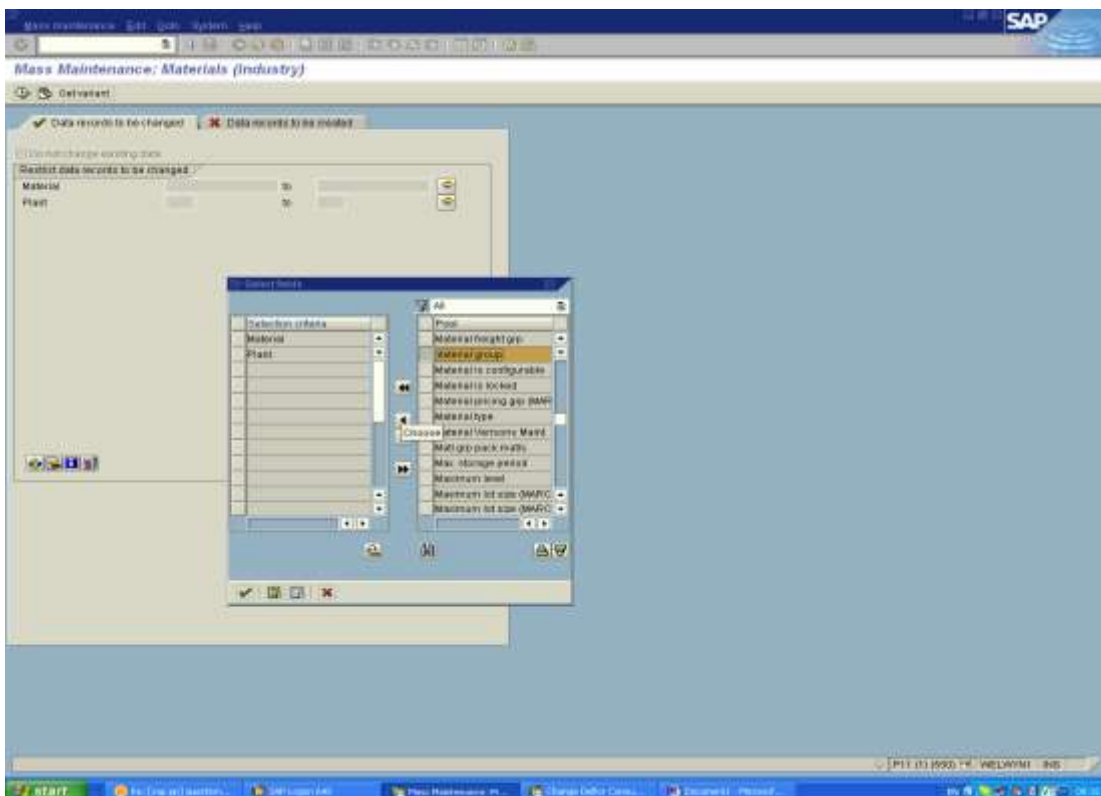
<http://www.erpgreat.com/sap-pp.htm>

### Mass Change The In-House Production Time

You will see the below screen. Click on the icon at the bottom next to where my screen shot says Choose selection fields.



Now scroll down until you find material group and click the little box next to it to highlight. Then click the arrow pointing left to move it to the left hand side selection criteria. Then click the green tick.

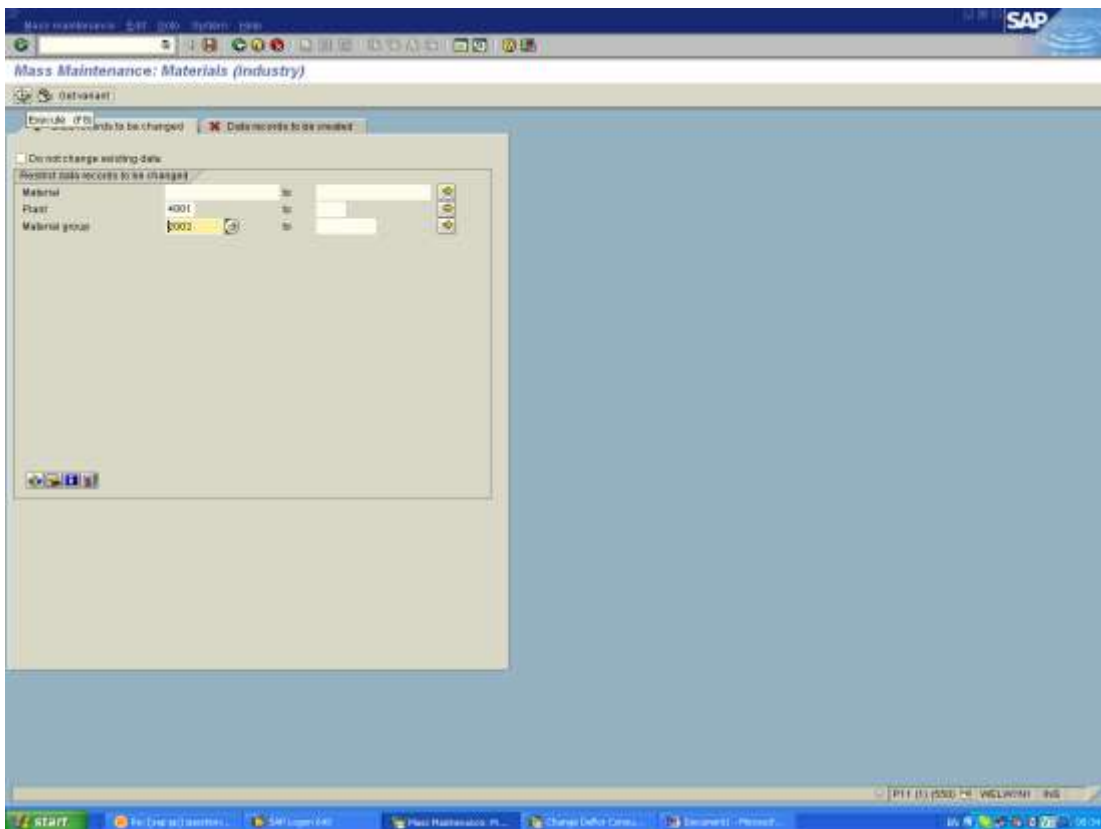


**Get more SAP Production and Planning Tips:**

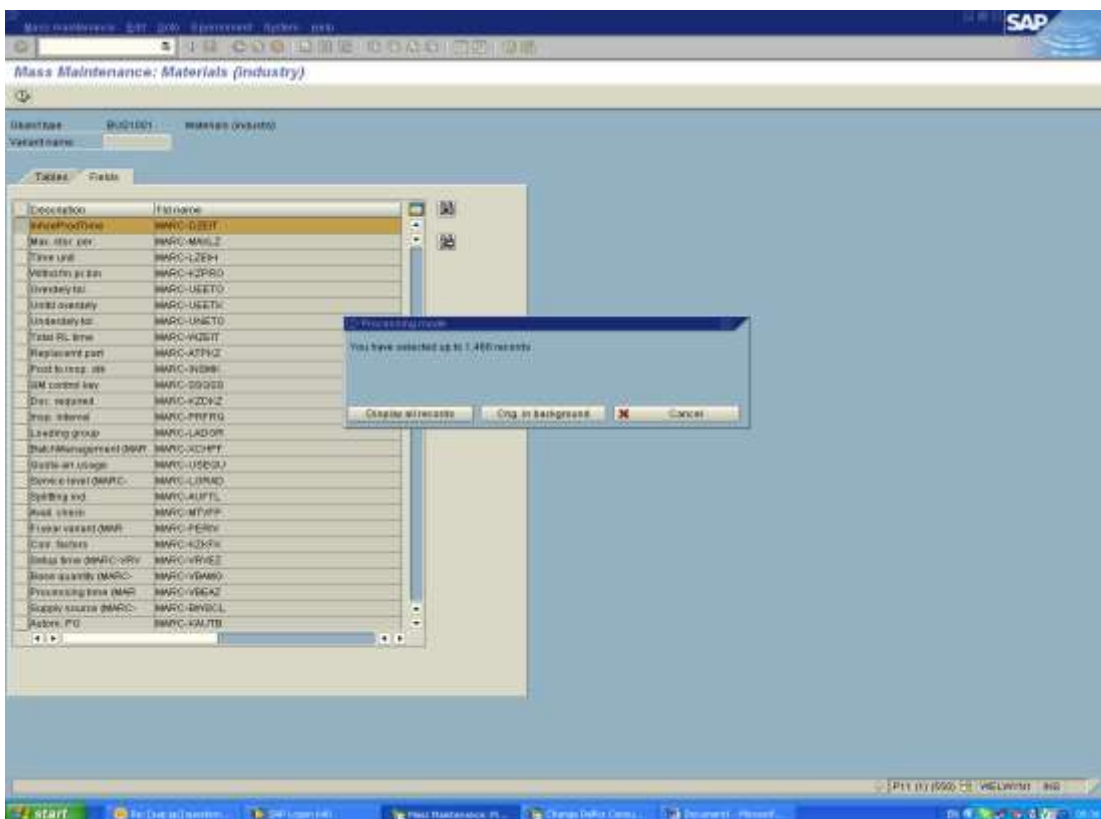
<http://www.erpgreat.com/sap-pp.htm>

## Mass Change The In-House Production Time

Then input plant and the material group (for the materials you want to change) my below example is for all my 2002 (finished goods) in plant 4001. Then click execute (or press (F8)).



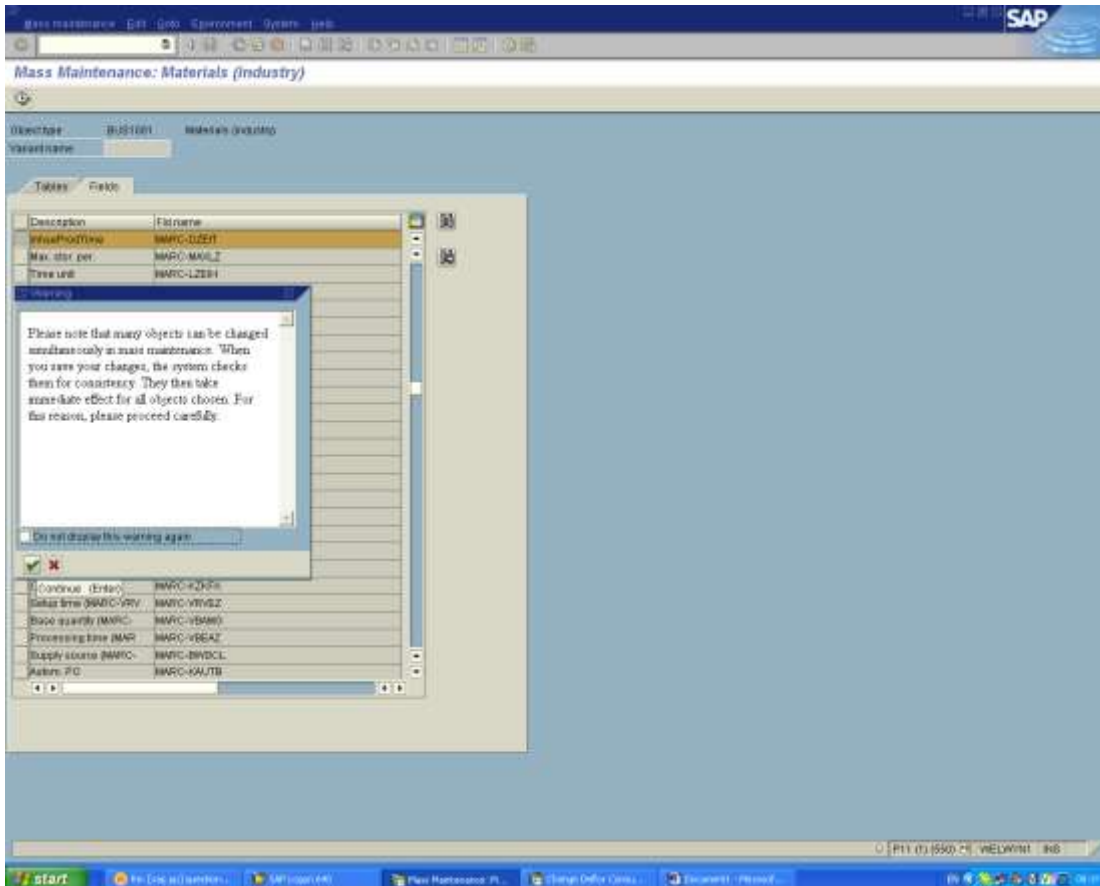
Then click display all records.



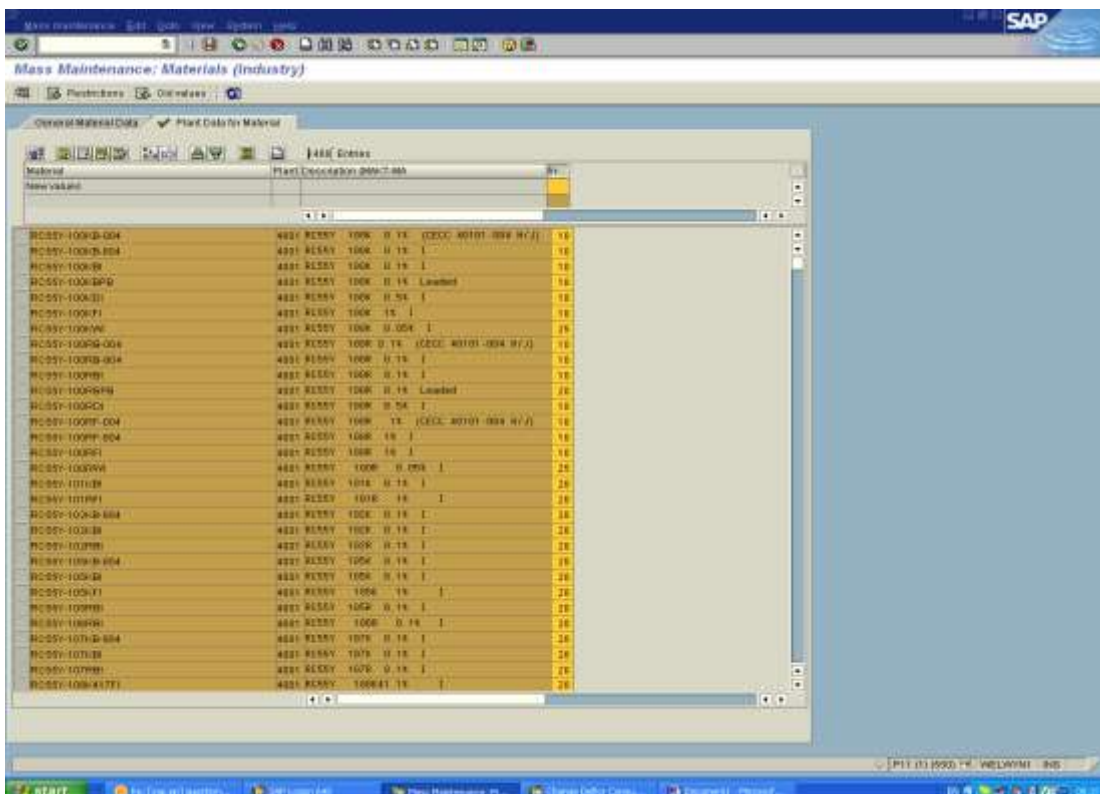
**Get more SAP Production and Planning Tips:**  
<http://www.erpgreat.com/sap-pp.htm>

### Mass Change The In-House Production Time

And green tick through warning message if you get it.



Now click the plant data tab so you see the screen below.

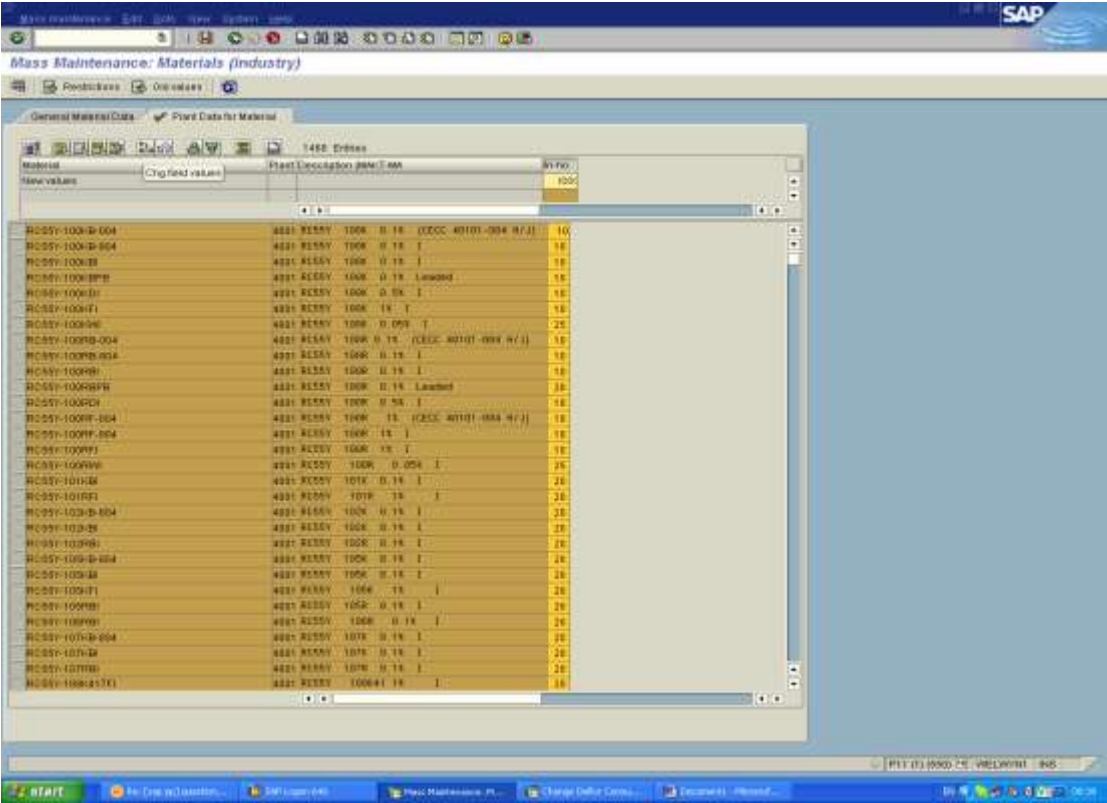


**Get more SAP Production and Planning Tips:**

<http://www.erpgreat.com/sap-pp.htm>

## Mass Change The In-House Production Time

Input the new value you want the materials to have where I have put XXX and click the icon above were my screen shot says Chg.Field values. Now click save icon or press (CTRL+S).



That will complete your mass change.

# Resource Guide

## Recommended Reading

### **mySAP Certification - Criteria For Application**

The guidelines: Criteria to applying for a SAP Certification:

<http://www.erpgreat.com/general/mysap-certification.htm>

### **How To Delete Old Production Orders**

Step by steps to delete those old production orders.

<http://www.erpgreat.com/production/how-to-delete-old-production-orders.htm>

### **Sample Questions on SAP PP**

Production Planning questions to test your knowledge:

<http://www.erpgreat.com/production/sample-questions-on-sap-pp.htm>

### **Table of the Order Production Operation**

Which is the table of the order production operation details?

<http://www.erpgreat.com/production/table-of-the-order-production-operation.htm>

### **List of Confirmation on a Particular Work Center**

How can we have list of confirmations done on a particular work center on a particular day?

<http://www.erpgreat.com/production/list-of-confirmation-on-a-particular-work-center.htm>